

# **CLASS I**

# **E.V.S NOTES**

# TERM I

# ENVIRONMENTAL SCIENCE

## LESSON-1. LIVING AND NON – LIVING THINGS

### I. NEW WORDS :-

- |            |              |            |               |             |
|------------|--------------|------------|---------------|-------------|
| 1. Grass   | 2. Chair     | 3. Birds   | 4. Seeds      | 5. Human    |
| 6. Breathe | 7. Reproduce | 8. Animals | 9. Television | 10. Natural |

### II. Match :



- Seeds



- Grass



- Chair



- Television



- Sun

### III. ANSWER THE FOLLOWING :

1. Name two living things.  
Birds, grass.
2. Name two non-living things.  
Chair, fan.
3. Name two man-made things.  
Top, ship
4. Name two natural things.  
Plants, animals.

### IV. DRAW AND NAME THE FOLLOWING:

1. Two living things.



tree



birds

2. Two non-living things



chair



top

## LESSON-2. FAMILY AND NEIGHBOURHOOD

### I. NEW WORDS:

- |                 |            |            |          |               |
|-----------------|------------|------------|----------|---------------|
| 1. Family       | 2. House   | 3. People  | 4. Fresh | 5. Neighbours |
| 6. Surroundings | 7. Nursery | 8. Garbage | 9. Area  | 10. Members   |

### II. Match :

- |              |   |         |
|--------------|---|---------|
| 1. Dustbin   | - | Garbage |
| 2. Nursery   | - | Plants  |
| 3. Hospitals | - | Doctors |
| 4. Family    | - | Members |

### III. ANSWER THE FOLLOWING:

1. What is a family?

People who live with us are called family.

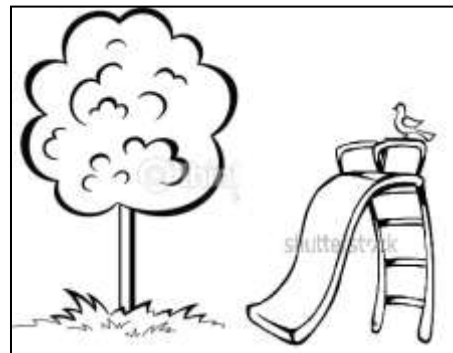
2. What is a neighbourhood?

The area around our house is called neighbourhood.

### IV. DRAW :



**HOUSE**



**PARK**

## LESSON-3. PLANTS AROUND US

### I. NEW WORDS:

- 1.Trees      2. Fruits      3.Herbs      4.Climbers      5.Flowers  
6.Leaves    7.Shrubs      8.Creepers    9.Soil          10. Stem

### II. Match :

1. Shrub          -      Jasmine  
2. Herbs          -      Coriander  
3.Creepers       -      Cucumber

### III. ANSWER THE FOLLOWING:

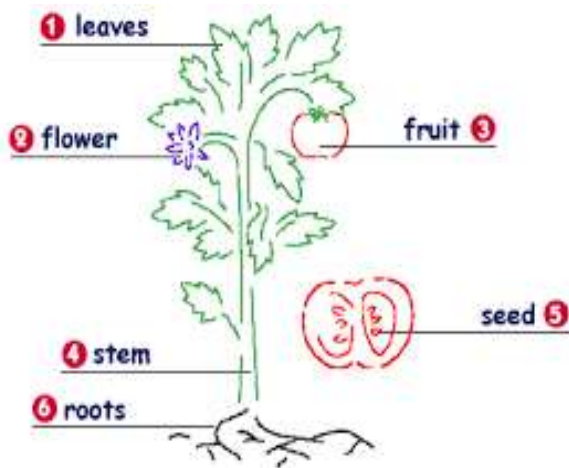
1. What are trees?

Tall and strong plants are called trees.

2. What are herbs?

Small plants with soft stem are called herbs.

### IV. DRAW A PLANT AND NAME ITS PARTS :



## LESSON -4. FOOD FROM PLANTS

### I. NEW WORDS:

1. Coffee
2. Cereals
3. Pulses
4. Roots
5. Cheese
6. Guava
7. National
8. Vegetables
9. Spices
10. Cabbage

### II. WRITE TRUE OR FALSE :

1. Cabbage is a group of leaves. - True
2. Cheese is got from plants. - False
3. We eat roots like radish and carrot. – True

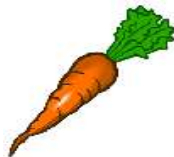
### III. ANSWER THE FOLLOWING :

1. Which is the National fruit of India?  
Mango.
2. Name any one flower we eat.  
Broccoli.
3. Name any stem we eat.  
Ginger.
4. Name leaves we eat.  
Mint.

### IV. DRAW AND NAME ANY TWO VEGETABLES AND FRUITS .



Tomato



Carrot



Apple



Grapes

## LESSON -5: ANIMALS AROUND US

### I. NEW WORDS:

1. Calf
2. Colt
3. Flea
4. Insects
5. Forest
6. Ostrich
7. Domestic
8. Penguin
9. Mosquito
10. Wild

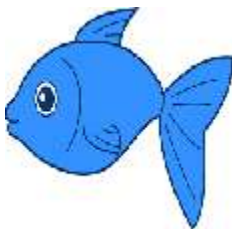
### II. NAME THE FOLLOWING :

1. Two birds that cannot fly  
Penguin and Ostrich.
2. Two animals that live in water  
Fish and Octopus.

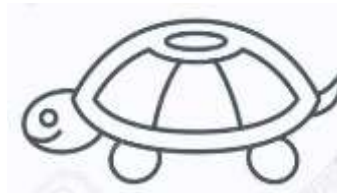
### III. ANSWER THE FOLLOWING:

1. What are wild animals?  
Animals that live in forests are called wild animals.
2. Which is the largest living animal?  
Blue whale is the largest living animal.

### IV. DRAW FISH AND TURTLE .



Fish



Turtle

## LESSON -6.FOOD AND HOMES OF ANIMALS

### I.NEW WORDS:

- |           |             |           |            |            |
|-----------|-------------|-----------|------------|------------|
| 1.Prey    | 2. Protect  | 3. Lizard | 4. Spider  | 5. Built   |
| 6. Burrow | 7.Crocodile | 8.Shelter | 9.Domestic | 10. Depend |

### II.MATCH THE FOLLOWING:

- |          |          |
|----------|----------|
| 1.Rabbit | - Burrow |
| 2.Spider | - Web    |
| 3.Dog    | - Kennel |
| 4.Hen    | - Coop   |
| 5.Bear   | - Cave   |

### III. ANSWER THE FOLLOWING :

1.Why do animals need a home ?

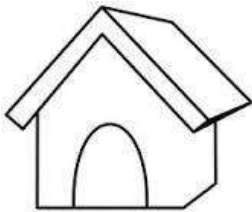
Animals need a home to protect them.

2.Where do domestic animals live ?

Domestic animals live in homes built by man.

### IV. DRAW THE HOMES OF THE FOLLOWING ANIMALS:

a)Dog



Kennel

b)Spider



Web



## LESSON -7 OUR BODY AND SENSE ORGANS

### I. NEW WORDS:

- |            |          |           |           |                  |
|------------|----------|-----------|-----------|------------------|
| 1. Salty   | 2. Knee  | 3. Tongue | 4. Sour   | 5. Rough         |
| 6. Stomach | 7. Sense | 8. Organs | 9. Smooth | 10. Bitter gourd |

### II. MATCH THE SENSE ORGANS:

1. Eyes - See
2. Ear - Hear
3. Nose - Smell
4. Tongue - Taste
5. Skin - Feel

### III. ANSWER THE FOLLOWING:

1. Name the five sense organs?  
Eyes, Ears, Nose, Tongue and Skin.
2. Name four different tastes.  
Sweet, Salty, Sour, Bitter.

### IV. DRAW AND NAME ANY TWO BODY PARTS :



Hand



Eyes

# **TERM-II**

## LESSON – 8. KEEPING HEALTHY AND CLEAN

### I. NEW WORDS:

- |           |            |            |           |            |
|-----------|------------|------------|-----------|------------|
| 1.Diet    | 2.Toilet   | 3.Grow     | 4.Cough   | 5. Yawn    |
| 6.Garbage | 7.Exercise | 8.Everyday | 9.Healthy | 10. Sneeze |

### II. MATCH THE FOLLOWING:

1. Exercise - daily
2. Throw garbage - in a dustbin
3. Brush - twice a day
4. Sleep - eight hours a day

### III. ANSWER THE FOLLOWING:

1. Why do we need food?  
We need food to grow and keep us healthy.
2. Write any two good habits.  
Take bath every day. Do not bite nails.

### IV. DRAW AND NAME ANY TWO FOODS THAT PROVIDE ENERGY.



Potato



Rice

## LESSON – 9. SAFETY MEASURES

### I. NEW WORDS:

- |             |            |                 |                   |            |
|-------------|------------|-----------------|-------------------|------------|
| 1. Footpath | 2. Disturb | 3. Safety rules | 4. Zebra crossing | 5. Careful |
| 6. Knife    | 7. Adult   | 8. Ready        | 9. Sharp          | 10. Queue  |

### II. MATCH THE FOLLOWING:

- |                  |             |
|------------------|-------------|
| 1. Do not run on | - staircase |
| 2. Never play on | - road      |
| 3. Red light     | - stop      |
| 4. Walk on the   | - foot path |

### III. ANSWER THE FOLLOWING:

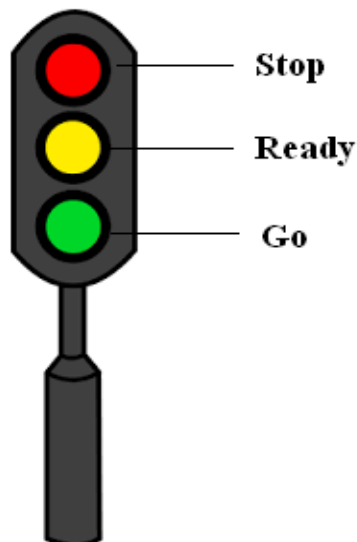
1. Why should we not touch the electric wires?

If we touch the electric wires, we may get an electric shock.

2. Mention any two safety rules followed on the road.

- Always walk on the foot path.
- Always cross the road at a zebra crossing.

### IV. DRAW AND LABEL THE TRAFFIC SIGNAL.



## LESSON 10. HOUSING AND CLOTHING

### I. NEW WORDS :

- |            |             |            |          |            |
|------------|-------------|------------|----------|------------|
| 1. Heat    | 2. Cotton   | 3. Woollen | 4. Sheep | 5. Dining  |
| 6. Protect | 7. Material | 8. Thief   | 9. Wind  | 10. Gloves |

### II. MATCH THE FOLLOWING :

- |             |                |
|-------------|----------------|
| 1. Study    | - Study room   |
| 2. Wool     | - Sheep        |
| 3. Cotton   | - Cotton plant |
| 4. Sleep    | - Bedroom      |
| 5. Eat food | - Dining room  |

### III. ANSWER THE FOLLOWING :

1. Why do we need a house ?

We need a house to live in.

2. Why do we wear clothes ?

We wear clothes to protect us from cold, heat, wind and rain.

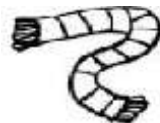
### IV. DRAW AND NAME THE DIFFERENT TYPES OF CLOTHES:



SWEATER



FROCK



MUFFLER



TROUSERS

## LESSON – 11 . AIR

### I. FILL IN THE BLANKS:

1. We can feel the air .
2. Air has weight.
3. We need air to breathe .

### II.MATCH THE FOLLOWING :

1. Fish - gills
2. Plant - pores
3. Humans - nose
4. Dirty air - pollution

### III. ANSWER THE FOLLOWING :

1. What is wind ?

Moving air is called wind.

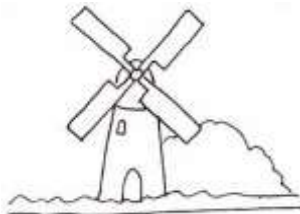
2. What is called storm ?

Fast and strong wind is called storm.

3. Name two things filled with air .

Tyres and Hot air balloon.

### IV. DRAW A WINDMILL.



Windmill

## LESSON -12 . WATER

### I.FILL IN THE BLANKS :

1. Rain water fills lakes and wells .
2. We can store water in the buckets .
3. People in villages use water from wells.
4. Animals need water for drinking ,

### II. MATCH THE FOLLOWING :

1. Plants \_ need water
2. Store water \_ tank
3. Hand pump \_ villages
4. Snow \_ melts into water
5. Put off fire \_ water

### III. ANSWER THE FOLLOWING:

1. Why should we boil water ?

We should boil water to kill the germs in it.

2. Write any five uses of water.

The five uses of water are drinking , cooking, washing, cleaning and bathing.

### IV. DRAW AND NAME ANY THREE THINGS WHERE WE STORE WATER.



Tank



Pot



Bucket

## LESSON-13. WEATHER

### I.FILL IN THE BLANKS :

1. The sun is bright on a sunny day.
2. We wear rain coat on a rainy day.
3. Flowers bloom in the spring season .
4. We like to keep warm on a cold day.

### II. MATCH THE FOLLOWING:

1. Sunny day - cotton clothes
2. Rainy day - rain coat
3. Cold day - hot milk or tea
4. Windy day - strong winds

### III. NAME THE FOLLOWING :

1. The five seasons: Summer, Winter, Spring, Monsoon and Autumn.
2. Two things used on a rainy day: Umbrella and rain coat.

### IV. ANSWER THE FOLLOWING :

1. What type of clothes do we wear on a sunny day ?  
We wear cotton clothes on a sunny day.
- 2 .What happens during autumn ?  
During autumn , the leaves on trees become yellow and fall.

### V. DRAW TWO THINGS YOU LIKE TO HAVE ON A SUNNY DAY .

a) Ice cream



b) Juice





## LESSON-14. THE EARTH AND THE OTHER HEAVENLY BODIES

### I.FILL IN THE BLANKS :

1. The Earth goes around the sun.
2. There are many stars in the sky.
3. The Sun gives us light and heat.

### II. TRUE OR FALSE :

1. The Sun is a star . True
2. The Sun sets in the east . False
3. June comes after May. True
4. There are 12 months in a year . True

### III. MATCH THE FOLLOWING :

- |            |                           |
|------------|---------------------------|
| 1. A week  | - 7 days                  |
| 2. A month | - 4 to 5 weeks            |
| 3. A year  | - 12 months               |
| 4. Moon    | - changes its shape daily |
| 5. Earth   | - goes around the sun     |

### IV. ANSWER THE FOLLOWING:

1. What is new moon?  
The moon disappears fully on some nights. This is called new moon.
2. Why do the stars look small ?  
The stars look small because they are very far away.

### V. DRAW THREE SHAPES OF MOON AND NAME THEM :



Full moon



Half moon



Crescent