

CLASS I

E.V.S NOTES

(2023 -24)

TERM I






ENVIRONMENTAL SCIENCE

LESSON-1. LIVING AND NON – LIVING THINGS

I. NEW WORDS :-

- | | | | | |
|------------|--------------|------------|---------------|-------------|
| 1. grass | 2. chair | 3. birds | 4. seeds | 5. human |
| 6. breathe | 7. reproduce | 8. animals | 9. television | 10. natural |

II. MATCH THE FOLLOWING:

- | | | |
|----------------------------------------------------------------------------------------|---|------------|
| 1.  | - | Seeds |
| 2.  | - | Grass |
| 3.  | - | Chair |
| 4.  | - | Television |
| 5.  | - | Sun |

III. ANSWER THE FOLLOWING :

1. Name two living things.
Birds, grass.
2. Name two non-living things.
Chair, fan.
3. Name two man-made things.
Top, ship
4. Name two natural things.
Plants, animals.

IV. DRAW AND NAME THE FOLLOWING:

1. Two living things.



Tree



birds

2. Two non-living thing



chair



top

LESSON-2. FAMILY AND NEIGHBOURHOOD

I. NEW WORDS:

- | | | | | |
|-----------------|-----------|-----------|---------|--------------|
| 1. family | 2.house | 3.people | 4.fresh | 5.neighbours |
| 6. surroundings | 7.nursery | 8.garbage | 9. area | 10.members |

II. MATCH THE FOLLOWING :

- | | | |
|--------------|---|---------|
| 1. dustbin | - | garbage |
| 2. nursery | - | plants |
| 3. hospitals | - | doctors |
| 4. family | - | members |

III. ANSWER THE FOLLOWING:

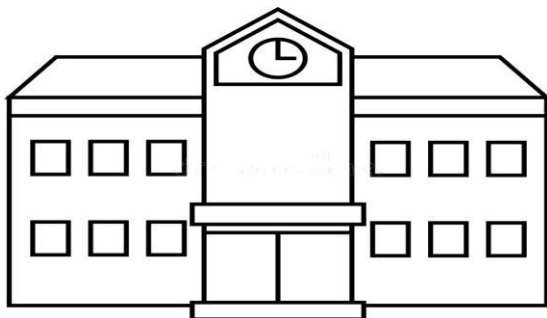
1. What is a family?

People who live with us are called family.

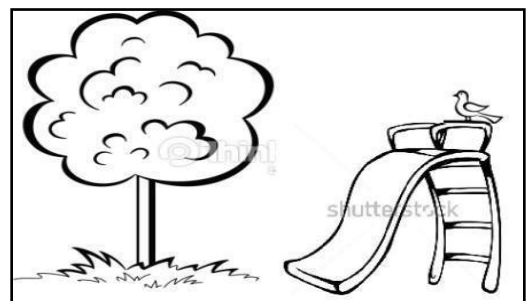
2. What is a neighbourhood?

The area around our house is called neighbourhood.

IV. DRAW AND NAME ANY TWO NEIGHBOURHOOD PLACES:



SCHOOL



PARK

LESSON-3. PLANTS AROUND US

I. NEW WORDS:

- | | | | | |
|-----------|-----------|-------------|-------------|------------|
| 1. trees | 2. fruits | 3. herbs | 4. climbers | 5. flowers |
| 6. leaves | 7. shrubs | 8. creepers | 9. soil | 10. stem |

II. MATCH THE FOLLOWING:

- | | | |
|------------|---|-----------|
| 1. shrub | - | jasmine |
| 2. herb | - | coriander |
| 3. creeper | - | cucumber |

III. ANSWER THE FOLLOWING:

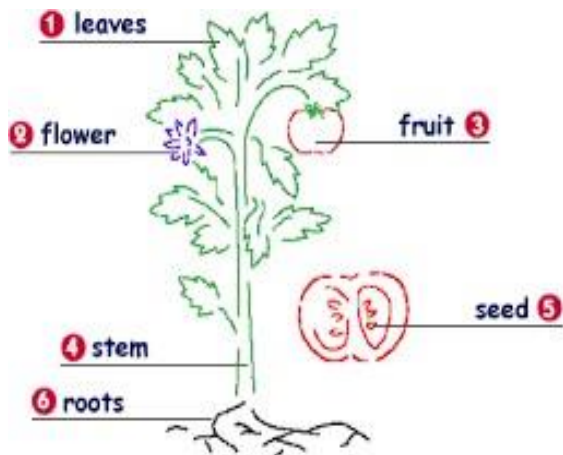
1. What are trees?

Tall and strong plants are called trees.

2. What are herbs?

Small plants with soft stem are called herbs.

IV. DRAW A PLANT AND NAME ITS PARTS :



LESSON -4. FOOD FROM PLANTS

I. NEW WORDS:

- | | | | | |
|----------|-------------|---------------|-----------|-------------|
| 1,coffee | 2. cereals | 3. pulses | 4. roots | 5. cheese |
| 6. guava | 7. National | 8. Vegetables | 9. spices | 10. cabbage |

II. WRITE TRUE OR FALSE :

1. Cabbage is a group of leaves. - True
2. We get cheese from plants. - False
3. We eat roots like radish and carrot. – True

III. ANSWER THE FOLLOWING :

1. Which is the National fruit of India?

Mango.

2. Name any one flower we eat.

Broccoli.

3. Name any stem we eat.

Ginger.

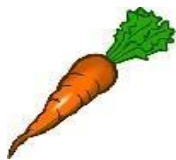
4. Name leaves we eat.

Mint.

IV. DRAW AND NAME ANY TWO VEGETABLES AND FRUITS.



Tomato



Carrot



Apple



Grapes

LESSON -5: ANIMALS AROUND US

I. NEW WORDS:

- | | | | | |
|------------|-------------|------------|-------------|-----------|
| 1. calf | 2. colt | 3. flea | 4. insects | 5. forest |
| 6. ostrich | 7. domestic | 8. penguin | 9. mosquito | 10. wild |

II. NAME THE FOLLOWING :

1. Two birds that cannot fly

Penguin and Ostrich.

2. Two animals that live in water

Fish and Octopus.

III. ANSWER THE FOLLOWING:

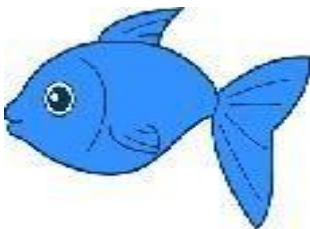
1. What are wild animals?

Animals that live in forests are called wild animals.

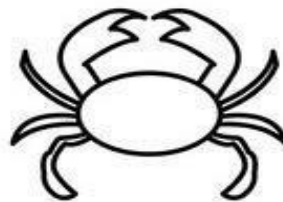
2. Which is the largest living animal?

Blue whale is the largest living animal.

IV. DRAW FISH AND CRAB:



Fish



Crab

LESSON -6.FOOD AND HOMES OF ANIMALS

I. NEW WORDS:

- | | | | | |
|-----------|--------------|------------|-------------|------------|
| 1. prey | 2. protect | 3. lizard | 4. spider | 5. built |
| 6. burrow | 7. crocodile | 8. shelter | 9. domestic | 10. depend |

II. MATCH THE FOLLOWING:

- | | | |
|-----------|---|--------|
| 1. rabbit | - | burrow |
| 2. spider | - | web |
| 3. dog | - | kennel |
| 4. hen | - | coop |
| 5. bear | - | cave |

III. ANSWER THE FOLLOWING :

1. Why do animals need a home ?

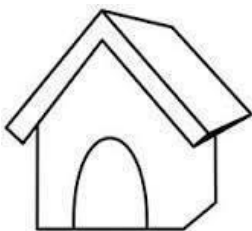
Animals need a home to protect them.

2. Where do domestic animals live ?

Domestic animals live in homes built by man.

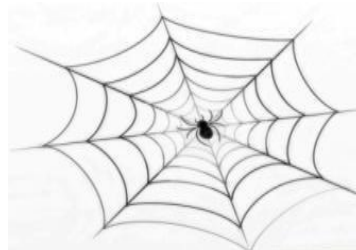
IV. DRAW THE HOMES OF THE FOLLOWING ANIMALS:

a) Dog



Kennel

b) Spider



Web

LESSON -7 OUR BODY AND SENSE ORGANS

I . NEW WORDS:

- | | | | | |
|------------|----------|-----------|-----------|------------------|
| 1. salty | 2.knee | 3. tongue | 4. sour | 5. rough |
| 6. stomach | 7. sense | 8. organs | 9. smooth | 10. bitter gourd |

II. MATCH THE FOLLOWING:

- | | | |
|-----------|---|-------|
| 1. eyes | - | see |
| 2. ear | - | hear |
| 3. nose | - | smell |
| 4. tongue | - | taste |
| 5. skin | - | feel |

III. ANSWER THE FOLLOWING:

1. Name the five sense organs?

Eyes, Ears, Nose, Tongue and Skin.

2. Name four different tastes.

Sweet, Salty, Sour, Bitter.

IV. DRAW AND NAME ANY TWO BODY PARTS :



Hand



Eyes

TERM-II

LESSON – 8. KEEPING HEALTHY AND CLEAN

I. NEW WORDS:

- | | | | | |
|-----------|------------|------------|-----------|------------|
| 1.diet | 2.fruits | 3.grow | 4.cough | 5. yawn |
| 6.garbage | 7.exercise | 8.everyday | 9.healthy | 10. sneeze |

II. MATCH THE FOLLOWING:

- | | |
|------------------|---------------------|
| 1. exercise | - daily |
| 2. throw garbage | - in a dustbin |
| 3. brush | - twice a day |
| 4. sleep | - eight hours a day |

III. ANSWER THE FOLLOWING:

1. Why do we need food?
We need food to grow and keep us healthy.
2. Write any two good habits.
 - Take bath every day.
 - Do not bite nails.

IV. DRAW AND NAME ANY TWO FOODS THAT PROVIDE ENERGY.



Potato



Rice

LESSON – 9. SAFETY MEASURES

I. NEW WORDS:

- | | | | | |
|-------------|------------|-----------------|-------------------|------------|
| 1. footpath | 2. disturb | 3. safety rules | 4. zebra crossing | 5. careful |
| 6. knife | 7. adult | 8. ready | 9. sharp | 10. Queue |

II. MATCH THE FOLLOWING:

- | | |
|------------------|-------------|
| 1. do not run on | - staircase |
| 2. never play on | - road |
| 3. red light | - stop |
| 4. walk on the | - foot path |

III. ANSWER THE FOLLOWING:

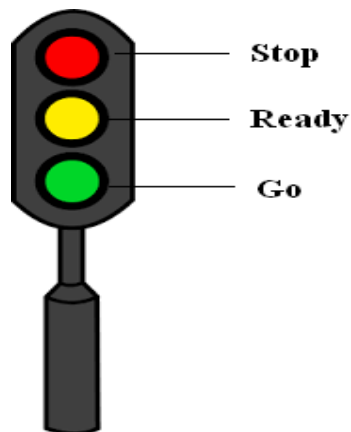
1. Why should we not touch the electric wires?

If we touch the electric wires, we may get an electric shock.

2. Mention any two safety rules followed on the road.

- Always walk on the foot path.
- Always cross the road at a zebra crossing.

IV. DRAW AND LABEL THE TRAFFIC SIGNAL.



LESSON 10. HOUSING AND CLOTHING

I. NEW WORDS :

- | | | | | |
|------------|-------------|-----------|---------|-----------|
| 1. heat | 2.cotton | 3.woollen | 4.sheep | 5. dining |
| 6. protect | 7. material | 8.thief | 9.wind | 10.gloves |

II. MATCH THE FOLLOWING :

- | | | |
|-------------|---|--------------|
| 1. study | - | study room |
| 2 . wool | - | sheep |
| 3. cotton | - | cotton plant |
| 4. sleep | - | bedroom |
| 5. eat food | - | dining room |

III. ANSWER THE FOLLOWING :

1. Why do we need a house ?

We need a house to live in.

2. Why do we wear clothes ?

We wear clothes to protect us from cold, heat, wind and rain.

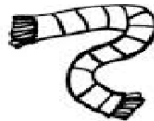
IV. DRAW AND NAME DIFFERENT TYPES OF CLOTHES:



SWEATER



FROCK



MUFFLER



TROUSERS

LESSON – 11 . AIR

I. FILL IN THE BLANKS:

1. We can feel the air .
2. Air has weight.
3. We need air to breathe .

II. MATCH THE FOLLOWING :

1. fish - gills
2. plant - pores
3. humans - nose
4. dirty air - pollution

III. ANSWER THE FOLLOWING :

1. What is wind ?

Moving air is called wind.

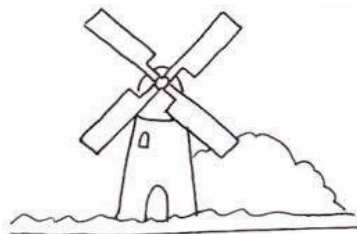
2. What is called storm ?

Fast and strong wind is called storm.

3. Name two things fill with air .

Tyres and Hot air balloon.

IV. DRAW A WINDMILL.



Windmill

LESSON -12 . WATER

I. FILL IN THE BLANKS :

1. Rain water fills lakes and wells .
2. We can store water in the buckets .
3. People in villages use water from wells.
4. Animals need water for drinking ,

II. MATCH THE FOLLOWING :

1. plants - need water
2. store water - tank
3. hand pump - villages
4. snow - melts into water
5. put off fire - water

III. ANSWER THE FOLLOWING:

1. Why should we boil water ?

We should boil water to kill the germs in it.

2. Write any five uses of water.

The five uses of water are drinking , cooking, washing, cleaning and bathing.

IV. DRAW AND NAME ANY THREE THINGS IN WHICH WE STORE WATER.



Tank



Pot



Bucket

LESSON-13. WEATHER

I. FILL IN THE BLANKS :

1. The sun is bright on a sunny day.
2. We wear rain coat on a rainy day.
3. Flowers bloom in the spring season .
4. We like to keep warm on a cold day.

II. MATCH THE FOLLOWING:

- | | | |
|--------------|---|-----------------|
| 1. sunny day | - | cotton clothes |
| 2. rainy day | - | rain coat |
| 3. cold day | - | hot milk or tea |
| 4. windy day | - | strong winds |

III. NAME THE FOLLOWING :

1. The five seasons: summer, winter, spring monsoon and autumn.
2. Two things used on a rainy day: Umbrella and rain coat.

IV. ANSWER THE FOLLOWING :

1. What type of clothes do we wear on a sunny day ?
We wear cotton clothes on a sunny day.
2. What happens during autumn ?
During autumn the leaves on trees become yellow and fall.

V. DRAW TWO THINGS YOU LIKE TO HAVE ON A SUNNY DAY .

a) Ice cream



b) Juice



LESSON-14. THE EARTH AND THE OTHER HEAVENLY BODIES

I. FILL IN THE BLANKS :

1. The Earth goes around the sun.
2. There are many stars in the sky.
3. The Sun gives us light and heat.

II. TRUE OR FALSE :

1. The Sun is a star . True
2. The Sun sets in the east . False
3. June comes after May. True
4. There are 12 months in a year . True

III. MATCH THE FOLLOWING :

- | | |
|------------|---------------------------|
| 1. A week | - 7 days |
| 2. A month | - 4 to 5 weeks |
| 3. A year | - 12 months |
| 4. Moon | - changes its shape daily |
| 5. Earth | - goes around the sun |

IV. ANSWER THE FOLLOWING:

1. What is new moon?
The moon disappears fully on some nights. This is called new moon.
2. Why do the stars look small ?
The stars look small because they are very far away.

V. DRAW AND NAME ANY THREE SHAPES OF MOON :



Full moon



Half moon



Crescent