

STD -1

E.V.S NOTES

(2025-26)

TERM-I
LN-1 MY BODY

I. New words:

1. eyes
2. nose
3. tongue
4. ears
5. fingers

II. Match the following:

1. eyes - see
2. ear - hear
3. nose - smell
4. tongue - taste
5. skin - feel

III. Answer the following:

1. Name any three parts of the body.

Ans: Head, Hands and Legs.

2. Name the five sense organs.

Ans: Eyes, Ears, Nose, Tongue and Skin.

IV. Draw and name any two body parts:



Hand



Eyes

LN-2. MY FAMILY

I. New words:

1. family
2. children
3. together
4. parents
5. vacation

II. Match the following:

- | | | |
|-----------------|---|----------------------|
| 1. siblings | - | brothers and sisters |
| 2. grandparents | - | big family |
| 3. family | - | members |
| 4. eating food | - | dining table |

III. Answer the following:

1. What is a small family?

Ans: A family that consists of parents and children is called as small family.

2. Why is our family important to us?

Ans: Our family loves and cares for us.

IV. Unscramble the words for the following:

- | | | |
|-----------|---|--------|
| a) OCUINS | - | COUSIN |
| b) ICPCNI | - | PICNIC |
| c) ECLNU | - | UNCLE |
| d) RETNAP | - | PARENT |

LN-3 HOME AND AROUND

I. New words:

1. house
2. neighbours
3. protects
4. bamboo
5. nursery

II. Match the following:

- | | | |
|----------------|---|---------|
| 1. dustbin | - | garbage |
| 2. nursery | - | plants |
| 3. hospital | - | doctors |
| 4. family | - | members |
| 5. post office | - | stamps |

III. Answer the following:

1. Why do we need a house?

Ans: We need a house to live in.

2. What are the two types of houses?

Ans: The two types of houses are Kutcha and Pucca houses.

III. Draw and name the following:

1. House



2. Hut



LN-4 MY SCHOOL

I. New words:

1. school
2. teacher
3. student
4. library
5. classroom

II. True or false:

1. We should go to school regularly. - True
2. You must pack your toys to school. - False
3. We learn new things at school. - True
4. We go to school to play with our friends. - False

III. Give two example:

1. Name any two important people at school.- **Sweeper , Bus driver**
2. Name any two rooms at your school. - **Classroom , Library**

IV. Answer the following:

1. What is a school?

Ans : A school is a place where children go to be educated.

2. Name any three things that you carry in your school bag.

Ans : Books, Pencil box and Water bottle.

LN-5 PEOPLE WHO HELP US

I. New words:

1. doctor
2. tailor
3. policeman
4. cobbler
5. postman

II. Match the following:

- | | | |
|-------------------|---|---------------------|
| 1. Teacher | - | teaching |
| 2. Doctor | - | treats sick people |
| 3. Postman | - | delivers letters |
| 4. Traffic police | - | control the traffic |

III. Answer the following:

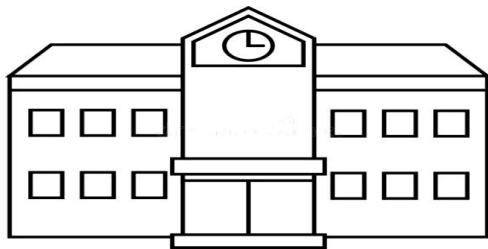
1. What is a neighbourhood?

Ans: The area around our house is called neighbourhood.

2. Where will you go if you are sick?

Ans: If I am sick, I will go to hospital.

IV. Draw and name any two neighbourhood places:



School



Hospital

LN-6 FOOD WE EAT

I. New words:

1. vegetables
2. diet
3. energy
4. meal
5. healthy

II. Fill in the blanks:

1. We need **food** to live.
2. Food gives us **energy** to work and play.
3. Food help us to grow **healthy**.
4. We get food from **plants** and **animals**.

III. Answer the following:

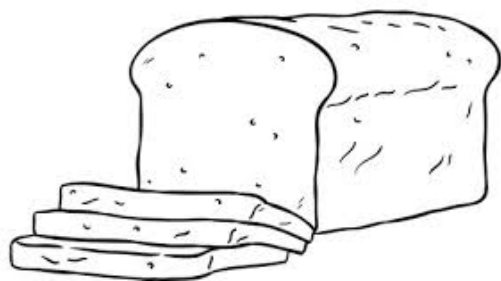
1. Name three foods that we get from animals.

Ans: The food that we get from animals are Milk, Egg and Meat.

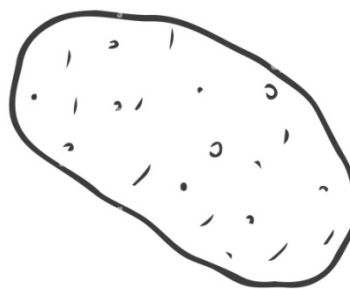
2. What do plants give us?

Ans: Plants give us fruits and vegetables.

IV. Draw and name any two food that gives us energy:



Bread



Potato

TERM-II

LN-7 CLOTHES WE WEAR

I. New words:

- | | |
|------------|-------------|
| 1. cotton | 6. season |
| 2. season | 7. summer |
| 3. clothes | 8. umbrella |
| 4. rain | 9. winter |
| 5. heat | 10. gloves |

II. Match the following:

- | | | |
|-----------|---|--------------|
| 1. Cotton | - | cotton plant |
| 2. Wool | - | sheep |
| 3. Summer | - | heat |
| 4. Rain | - | raincoat |
| 5. Winter | - | cold |

III. Answer the following:

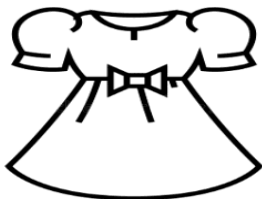
1. Why do we wear clothes?

Ans: We wear clothes to protect our body from cold, heat and rain.

2. What type of clothes do we wear on a sunny day?

Ans: We wear cotton clothes on a sunny day.

IV. Draw and name any two types of clothes:



Frock



Muffler

LN-8 WEATHER AND SEASONS

I. Fill in the blanks:

1. The sun is hot and bright on a **sunny** day.
2. The leaves on trees become yellow and fall in the **autumn** season.
3. Flowers bloom in the **spring** season.
4. The days are cold and snow in some places, during the **winter** season.

II. Match the following:

- | | | |
|--------------|---|------------------|
| 1. Sunny day | - | cotton clothes |
| 2. Rainy day | - | umbrella |
| 3. Cold day | - | hot soup or milk |
| 4. Windy day | - | strong winds |

III. Give two examples:

1. Any two seasons - **Summer , Winter**
2. Any two things like to have on a sunny day - **Juice , Ice-cream**

IV. Answer the following:

1. Why don't we wear a sweater on a hot day?

Ans: We don't wear a sweater on a hot day because it's hot and sunny.

2. What are the weather conditions in these seasons?

Ans: i) Summer - hot day

ii) Winter - cold day

V. Draw two things that we use on a rainy day:



Umbrella



Raincoat

LN-9 AIR

I. New words:

- | | |
|------------|------------|
| 1.sail | 6. breathe |
| 2.balloon | 7. move |
| 3. space | 8. trumpet |
| 4. squeeze | 9. kite |
| 5. blow | 10. weight |

II. Write true or false:

- | | | |
|---------------------------------|---|---------------------|
| 1. An empty glass occupies air. | - | <u>True</u> |
| 2. Air has no weight. | - | <u>False</u> |
| 3. We can see air. | - | <u>False</u> |
| 4. Fresh air keeps us healthy. | - | <u>True</u> |

III. Unscramble the letters:

- | | | |
|-----------|---|--------|
| 1. UNRODA | - | AROUND |
| 2. RNBU | - | BURN |
| 3. HESRF | - | FRESH |
| 4. WOLB | - | BLOW |

IV. Answer the following:

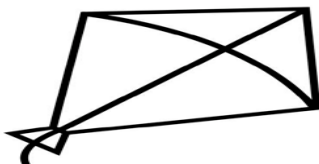
1. What do we breathe in?

Ans: We breathe in air.

2. What is wind?

Ans: Moving air is called wind.

V. Draw and name two things that need air to move:



Kite



Boat

LN-10 DROPS OF WATER

I. New words:

- | | |
|----------|-----------|
| 1. pond | 6. rain |
| 2. lake | 7. live |
| 3. river | 8. water |
| 4. sea | 9. well |
| 5. ocean | 10. drink |

II. Unscramble the letters:

- | | | |
|----------|---|-------|
| 1. IERRV | - | RIVER |
| 2. CANOE | - | OCEAN |
| 3. ODNP | - | POND |
| 4. AELK | - | LAKE |

III. Write true or false:

- | | | |
|--|---|--------------|
| 1. We should not save water. | - | <u>False</u> |
| 2. We should close the tap while brushing our teeth. | - | <u>True</u> |
| 3. We need water to live. | - | <u>True</u> |
| 4. We should use plenty of water to clean our bikes. | - | <u>False</u> |

IV. Answer the following:

1. Name any four sources of water.

Ans: Ponds, lakes, rivers, and seas.

2. Name any two things that need water to live.

Ans: Plants and animals.

V. Draw and name any two things in which we store water:



Pot



Tank

LN-11. OUR GREEN FRIENDS

I. New words:

- | | |
|------------|-------------|
| 1. herbs | 6. climbers |
| 2. trees | 7. stem |
| 3. fruits | 8. roots |
| 4. leaves | 9. soil |
| 5. flowers | 10. Shrubs |

II. Match the following:

- | | | |
|------------|---|-------------|
| 1. Shrub | - | jasmine |
| 2. Creeper | - | pumpkin |
| 3. Herb | - | coriander |
| 4. Mango | - | tree |
| 5. Climber | - | money plant |

III. Give two examples:

- | | | |
|---------------------|---|--|
| 1. Any two trees | - | <u>Neem tree</u> , <u>Mango tree</u> |
| 2. Any two creepers | - | <u>Watermelon plant</u> , <u>Pumpkin plant</u> |

IV. Answer the following:

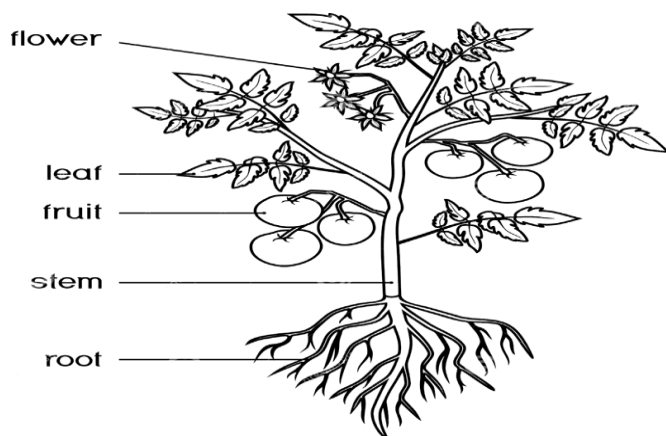
1. What are trees?

Ans: Tall and strong plants are called trees.

2. Name the different types of plants.

Ans: Herbs, shrubs, trees, creepers, and climbers.

V. Draw and name the parts of a plant:



LN- 12 WORLD OF ANIMALS

I. New words:

- | | |
|-------------|------------|
| 1. forest | 6. calf |
| 2. wild | 7. depend |
| 3. shelter | 8. nest |
| 4. domestic | 9. giraffe |
| 5. insects | 10. kitten |

II. Match the following:

- | | | |
|-----------|---|--------|
| 1. rabbit | - | burrow |
| 2. dog | - | kennel |
| 3. hen | - | coop |
| 4. bear | - | cave |
| 5. cow | - | shed |

III. Give two examples:

- | | | |
|-------------------------|---|------------------------|
| 1. Any two wild animals | - | <u>Elephant ,Tiger</u> |
| 2. Any two pet animals | - | <u>Cat , Dog</u> |

IV. Answer the following:

1. What are wild animals?

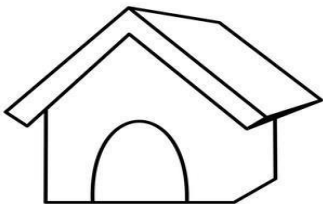
Ans: Animals that live in forests are called wild animals.

2. Where do domestic animals live?

Ans: Domestic animals live in homes built by man.

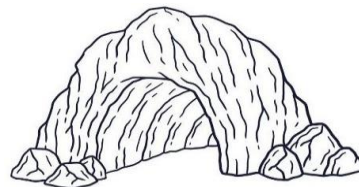
V. Draw and name the homes of the animals:

1. Dog



Kennel

2. Bear



Cave

LN-13 UP IN THE SKY

I. Fill in the blanks:

1. There are many stars in the sky.
2. The sun gives us light and heat.
3. The moon is the brightest object in the night sky.

II. True or false:

1. The Sun is a star - **True**
2. The Sun sets in the east - **False**
3. The Shape of the moon seems to change every night - **True**
4. We see the moon and the stars at night. - **True**

III. Match the following:

1. Moon - changes its shapes daily
2. Star - twinkle at night
3. East - sunrises
4. Sun - a ball of fire

IV. Answer the following:

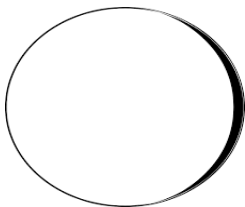
1. What is a new moon?

Ans: The moon disappears fully on some nights. This is called new moon.

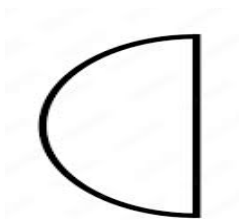
2. Why do the stars look tiny?

Ans: The stars look tiny because they are very far away from us.

V. Draw and name any three shapes of moon:



Full Moon



Half Moon



Crescent