

STD-1

E.V.S NOTES

(2026-27)

LN-1 MY BODY

I. New words:

1. eyes
2. nose
3. tongue
4. ears
5. fingers

II. Match the following:

1. Eyes - see
2. Ear - hear
3. Nose - smell
4. Tongue - taste
5. Skin - feel

III. Answer the following:

1. Name any three parts of the body.

Ans: Head, Hands and Legs.

2. Name the five sense organs.

Ans: Eyes, Ears, Nose, Tongue and Skin.

IV. Draw and name any two body parts:



Hand



Eyes

LN-2 MY FAMILY

I. New words:

1. family
2. children
3. cousin
4. parents
5. vacation

II. Match the following:

- | | | |
|-----------------|---|----------------------|
| 1. Siblings | - | brothers and sisters |
| 2. Grandparents | - | big family |
| 3. Family | - | members |
| 4. Eating food | - | dining table |

III. Give two examples:

- | | | |
|-----------------------|---|------------------------|
| 1. Two family members | - | <u>Mother, Father</u> |
| 2. Siblings | - | <u>Sister, Brother</u> |

IV. Answer the following:

1. What is a small family?

Ans: A family that consists of parents and their children is called a small family.

2. Why is our family important to us?

Ans: Our family loves and cares for us.

LN-3 HOME AND AROUND

I. New words:

1. house
2. neighbours
3. protects
4. plants
5. nursery

II. Match the following:

1. Dustbin - garbage
2. Nursery - plants
3. Hospital - doctors
4. Family - members
5. Post office - stamps

III. Answer the following:

1. Why do we need a house?

Ans: We need a house to live in.

2. What is a neighbourhood?

Ans: The area around our house is called our neighbourhood.

IV. Draw and name the following:



A house



A hut

LN-4 MY SCHOOL

I. New words:

1. school
2. teacher
3. student
4. library
5. classroom

II. True or false:

1. A school is a place where students go to learn. - True
2. Teachers help students understand different subjects. - True
3. Students never have homework in school. - False
4. Schools are only for playing games. - False

III. Give two examples:

1. Important people at school - Student, Teacher
2. Rooms at your school - Classroom, Library

IV. Answer the following:

1. What is a school?

Ans: A school is a place where we go to study and learn.

2. Name any three things that you carry in your school bag.

Ans: Books, Pencil box and Water bottle.

LN-5 PEOPLE WHO HELP US

I. New words:

1. doctor
2. tailor
3. policeman
4. cobbler
5. postman

II. Match the following:

- | | | |
|-------------------|---|----------------------|
| 1. Teacher | - | teaching |
| 2. Doctor | - | treats sick people |
| 3. Tailor | - | stitches clothes |
| 4. Traffic police | - | controls the traffic |

III. Answer the following:

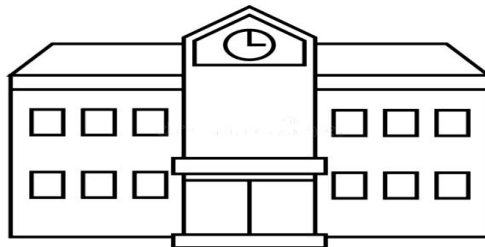
1. Who are the people that help us in our daily life?

Ans: People like doctors, teachers and traffic police help us in our daily life.

2. Why are people who help us important to society?

Ans: They are important because they keep us safe, healthy and help us learn.

IV. Draw and name a neighbourhood place:



School

LN-6 FOOD WE EAT

I. New words:

1. vegetables
2. diet
3. energy
4. meal
5. healthy

II. Fill in the blanks:

1. We need to eat **healthy** food.
2. Food makes us **strong**.
3. We should drink plenty of **water**.
4. We get food from **plants** and **animals**.

III. Answer the following:

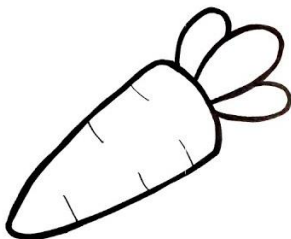
1. Why do we need healthy food?

Ans: We need healthy food to live and grow.

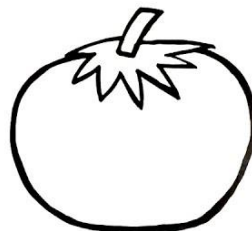
2. Name any three fruits.

Ans: Apple, mango and banana.

IV. Draw and name any two vegetables that gives us energy:



Carrot



Tomato

LN-7 CLOTHES WE WEAR

I. New words:

- | | |
|------------|-------------|
| 1. cotton | 6. protect |
| 2. season | 7. summer |
| 3. clothes | 8. umbrella |
| 4. rain | 9. winter |
| 5. heat | 10. gloves |

II. Match the following:

- | | | |
|-----------|---|--------------|
| 1. Cotton | - | cotton plant |
| 2. Summer | - | heat |
| 3. Rain | - | raincoat |
| 4. Winter | - | cold |

III. Answer the following:

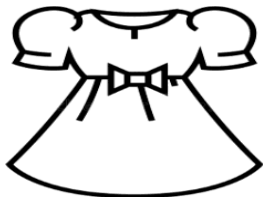
1. Why do we wear clothes?

Ans: We wear clothes to protect our body from cold, heat and rain.

2. What type of clothes do we wear on a sunny day?

Ans: We wear cotton clothes on a sunny day.

IV. Draw and name any two types of clothes:



A frock



A muffer

LN-8 WEATHER AND SEASONS

I. Fill in the blanks:

1. The sun is hot and bright on a sunny day.
2. The leaves on trees become yellow and fall in the autumn season.
3. Flowers bloom in the spring season.
4. The days are cold and snow in some places, during the winter season.

II. Match the following:

1. Sunny day - cotton clothes
2. Rainy day - umbrella
3. Cold day - hot soup or milk
4. Windy day - strong winds

III. Give two examples:

1. Seasons - Summer, Winter
2. Things like to have on a sunny day - Juice, Ice-cream

IV. Answer the following:

1. What are the different types of weather we have?

Ans: We have sunny, rainy, windy, cloudy, and snowy weather.

2. Why do we wear different clothes in different seasons?

Ans: We wear different clothes to stay comfortable in the weather.

V. Draw two things that we use on a rainy day:



An umbrella



A raincoat

LN-9 AIR

I. New words:

- | | |
|------------|------------|
| 1. sail | 6. breathe |
| 2. balloon | 7. move |
| 3. space | 8. trumpet |
| 4. squeeze | 9. kite |
| 5. blow | 10. weight |

II. Write true or false:

- | | |
|---|---------|
| 1. Air helps light a fire and put it out. | - True |
| 2. Air occupies space. | - True |
| 3. We can see air. | - False |
| 4. Air helps us to breathe. | - True |

III. Give two examples:

- | | |
|--|------------------------|
| 1. Importance of air | - <u>Breathe, Burn</u> |
| 2. Things that move with the help of air | - <u>Kite, Boat</u> |

IV. Answer the following:

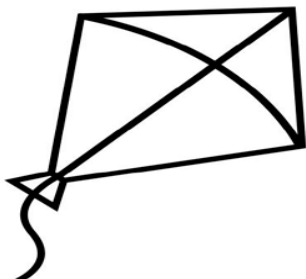
1. What do we breathe in?

Ans: We breathe in air.

2. What is wind?

Ans: Moving air is called wind.

V. Draw and name two things that need air to move:



A kite



A boat

LN-10 DROPS OF WATER

I. New words:

- | | |
|----------|-----------|
| 1. pond | 6. rain |
| 2. lake | 7. live |
| 3. river | 8. water |
| 4. sea | 9. well |
| 5. ocean | 10. drink |

II. Give two examples:

1. Uses of water - Drinking, Cooking
2. Sources of water - Pond, Lake

III. Write true or false:

1. We should not save water. - False
2. We should close the tap while brushing our teeth. - True
3. We need water to live. - True
4. We should use plenty of water to clean our bikes. - False

IV. Answer the following:

1. Why do we need water?

Ans: We need water to live.

2. Write any two uses of water.

Ans: We use water for cooking and drinking.

V. Draw and name any two things in which we store water:



A pot



A tank

LN-11. OUR GREEN FRIENDS

I. New words:

- | | |
|------------|-------------|
| 1. herbs | 6. climbers |
| 2. trees | 7. stem |
| 3. fruits | 8. roots |
| 4. leaves | 9. soil |
| 5. flowers | 10. shrubs |

II. Match the following:

- | | | |
|------------|---|-------------|
| 1. Shrub | - | jasmine |
| 2. Creeper | - | pumpkin |
| 3. Herb | - | coriander |
| 4. Mango | - | tree |
| 5. Climber | - | money plant |

III. Give two examples:

- | | | |
|-------------|---|--|
| 1. Trees | - | <u>Neem tree, Mango tree</u> |
| 2. Creepers | - | <u>Watermelon plant, Pumpkin plant</u> |

IV. Answer the following:

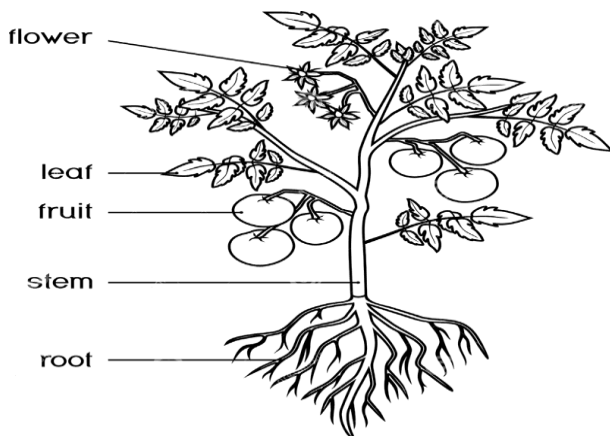
1. What are trees?

Ans: Tall and strong plants are called trees.

2. Name the different types of plants.

Ans: Herbs, shrubs, trees, creepers and climbers.

V. Draw and name the parts of a plant:



LN-12 WORLD OF ANIMALS

I. New words:

- | | |
|-------------|------------|
| 1. forest | 6. calf |
| 2. wild | 7. depend |
| 3. shelter | 8. nest |
| 4. domestic | 9. giraffe |
| 5. insects | 10. kitten |

II. Match the following:

- | | | |
|-----------|---|--------|
| 1. Rabbit | - | burrow |
| 2. Dog | - | kennel |
| 3. Hen | - | coop |
| 4. Bear | - | cave |
| 5. Cow | - | shed |

III. Give two examples:

- | | | |
|-----------------|---|------------------------|
| 1. Wild animals | - | <u>Elephant, Tiger</u> |
| 2. Pet animals | - | <u>Cat, Dog</u> |

IV. Answer the following:

1. What are wild animals?

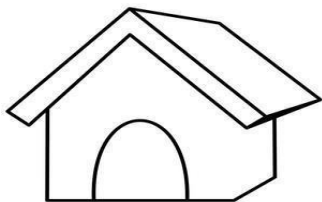
Ans: Animals that live in forests are called wild animals.

2. Where do domestic animals live?

Ans: Domestic animals live in homes built by man.

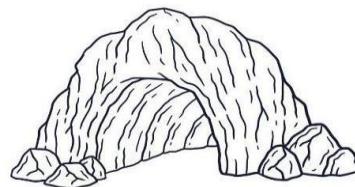
V. Draw the homes of the animals:

1. Dog



Kennel

2. Bear



Cave

LN-13 UP IN THE SKY

I. Fill in the blanks:

1. There are many stars in the sky.
2. The sun gives us light and heat.
3. The moon is the brightest object in the night sky.

II. True or false:

1. The sun is a star. - True
2. The sun sets in the east. - False
3. The shape of the moon seems to change every night. - True
4. We see the moon and the stars at night. - True

III. Match the following:

1. Moon - different shapes every night
2. Star - twinkle at night
3. East - sun rises
4. Sun - a ball of fire

IV. Answer the following:

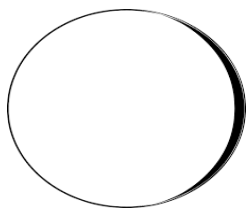
1. What is a new moon?

Ans: The moon disappears fully on some nights. This is called a new moon.

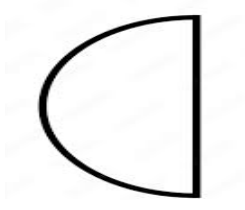
2. Why do the stars look tiny?

Ans: The stars look tiny because they are very far away from us.

V. Draw and name any three shapes of moon:



Full moon



Half moon



Crescent